



CORESITE

An American Tower Company

SILICON VALLEY SV9

Hybrid Connects **Here**



www.CoreSite.com



SV9 — **Coming Soon!**

CoreSite's strategic Silicon Valley campus expansion includes a new facility, SV9. This purpose-built data center will be constructed to offer 200,000 square feet of turn-key data center space and 34 CMW capacity in 2024.

Space



Facility Size

200,000 SF of data center

Four-story facility with optionality for RAF or on-slab deployments

Deployments

Cabinets, cages, private suites, and built-to-suit

Power Availability

AC at 208V or 415V

Fitout

Turn-key, infrastructured shell and powered shell

Connectivity



Open Cloud Exchange®

Real-time control of multi-cloud deployments and simplified inter-market connectivity through a single pane of glass

Peering Exchanges

Any2Exchange® for internet peering and AMS-IX Bay Area

Cross Connects

Fiber, copper and coaxial

Carrier Availability

See our carrier list located at CoreSite.com/carrier-list

Diversity

Diverse POEs, MDFs, IDFs

Security



Access

Key cards, biometric scanners, and mantrap entries, perimeter site fence

Cameras

Perimeters and interior IP-DVR

Security Officers

24x7x365 on-site security qualified personnel

Reliability



Utilities

Onsite 2N Silicon Valley Power Substation

Fuel Storage

24 hours, on-site

Water Storage

12 hours of on-site makeup water storage

Plumbing

Dual city water sources 12-hour on-site storage

Generators

N+2 Redundancy

UPS/PDU/RPP

Distributed redundant

BMS Controls

State-of-the-art mission critical controls and monitoring

Operations

24x7x365 remote hands

Mechanical

N+1 redundancy, concurrently maintainable ASHRAE 20-year extreme weather conditions

Flood Plain

Above 500-year flood plain

Uptime

100% SLA

Structure



Floor Loading

225 pounds/SF

Elevators

Passenger: 5,000 pounds
Freight: 10,000 pounds

Hardened Exterior

1.5 importance factor

Clear Height

11' above 36" raise floor or 14' on slab

Loading Dock

Hydraulic lift gate

Column Spacing

30' 4" x 31'

Efficiency



Chiller Plant

Water-cooled, magnetic-bearing, variable speed chillers, adiabatic dry coolers, minimized water usage

Electrical

High-efficiency UPS systems

Utility Power

Power taken at 12kV to achieve rate reduction and distribution efficiencies

Data Hall Cooling

CRAH unit with EC motors, dedicated outside air rooftop units with heat pump, integrated dehumidification and MERV-13 air filtration, hot aisle containment

Life Safety

Fire pump, dual-interlock preaction sprinkler systems, air sampling smoke detection

Monitoring

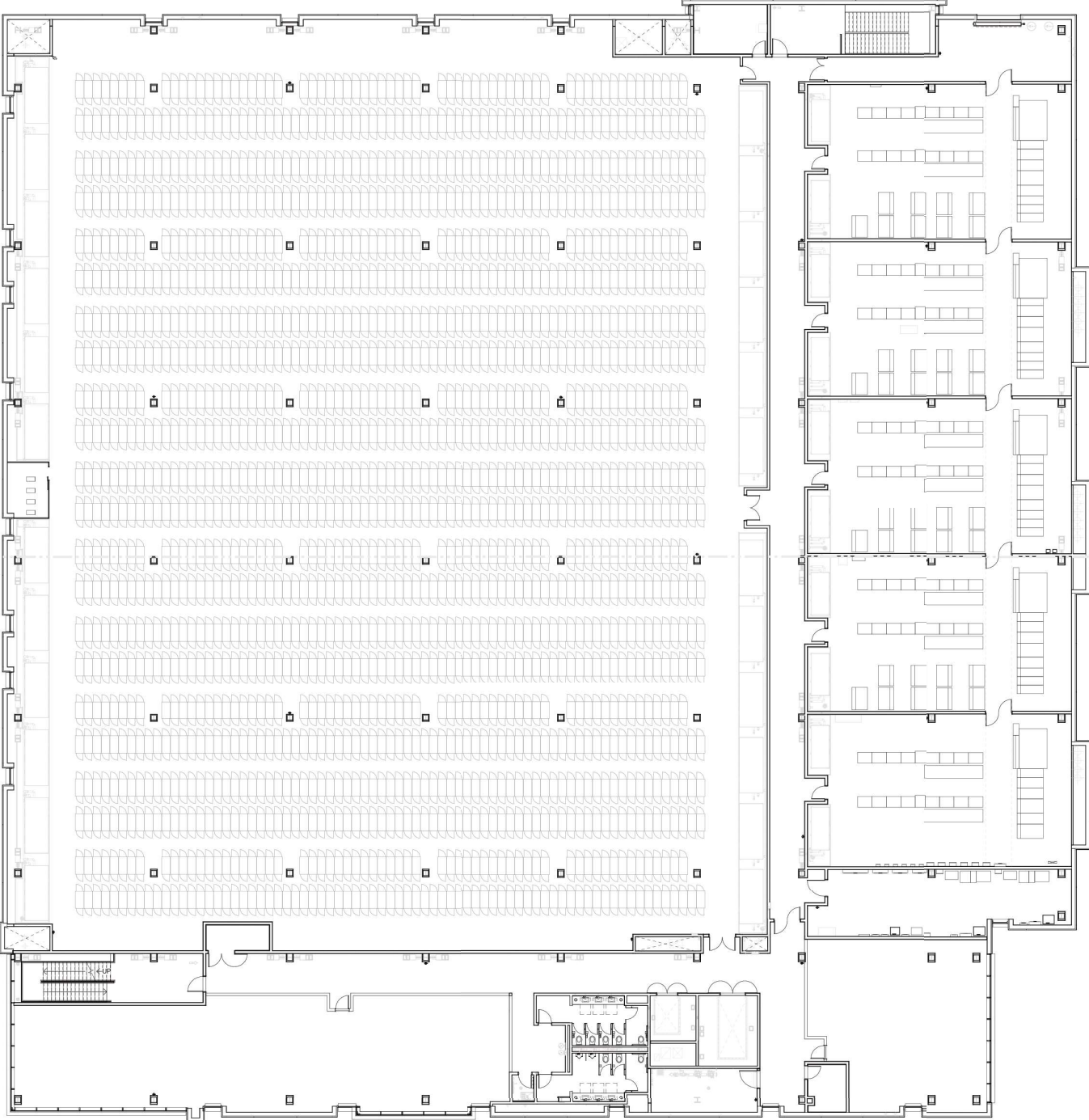
RF code readers for pin-point accuracy of temperature and humidity within customer deployments

Lighting

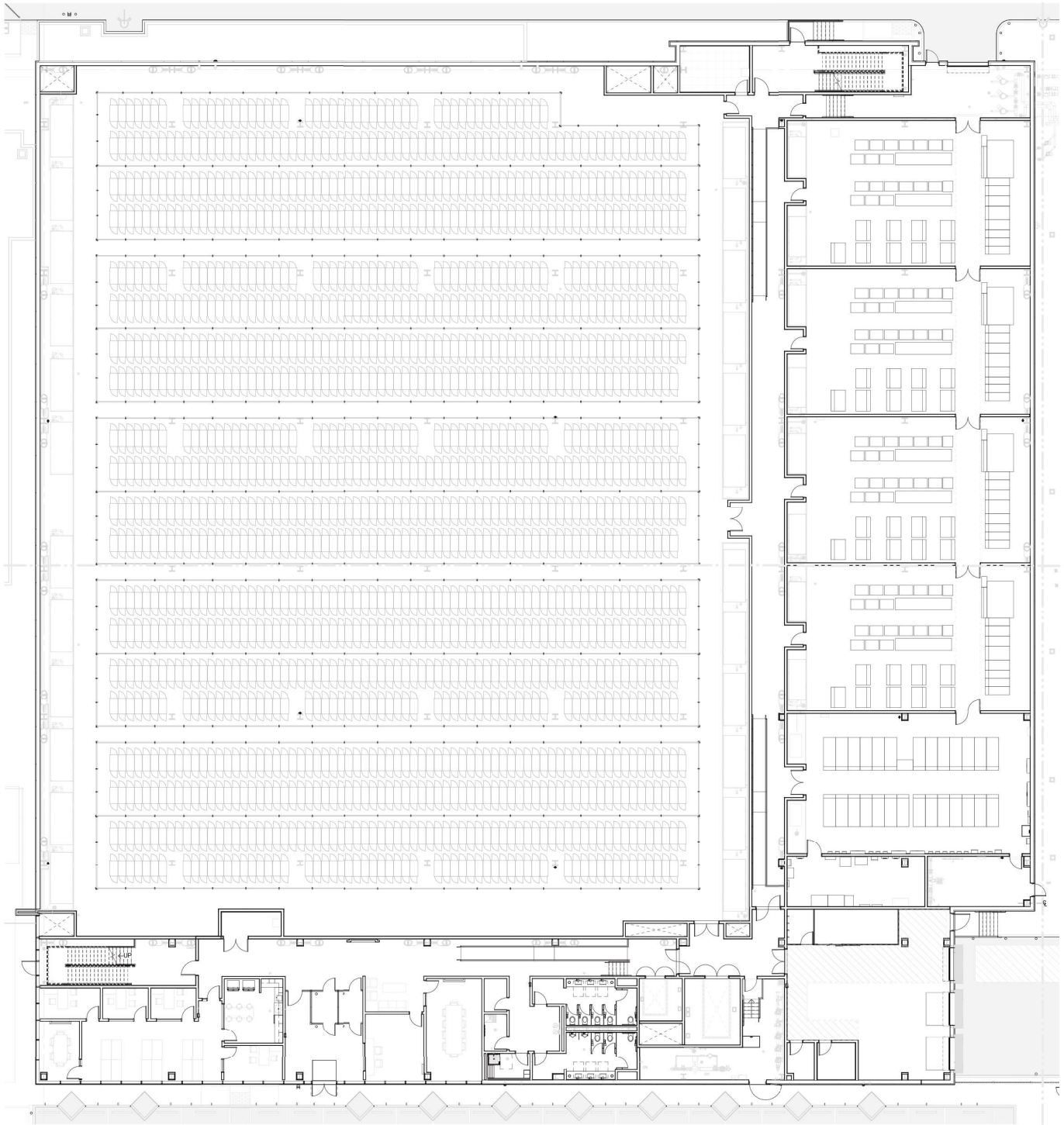
Lutron Eco-System lighting controls, LED lighting system

Sample Plans

Sample plans show potential configurations of cabinets and private suites.

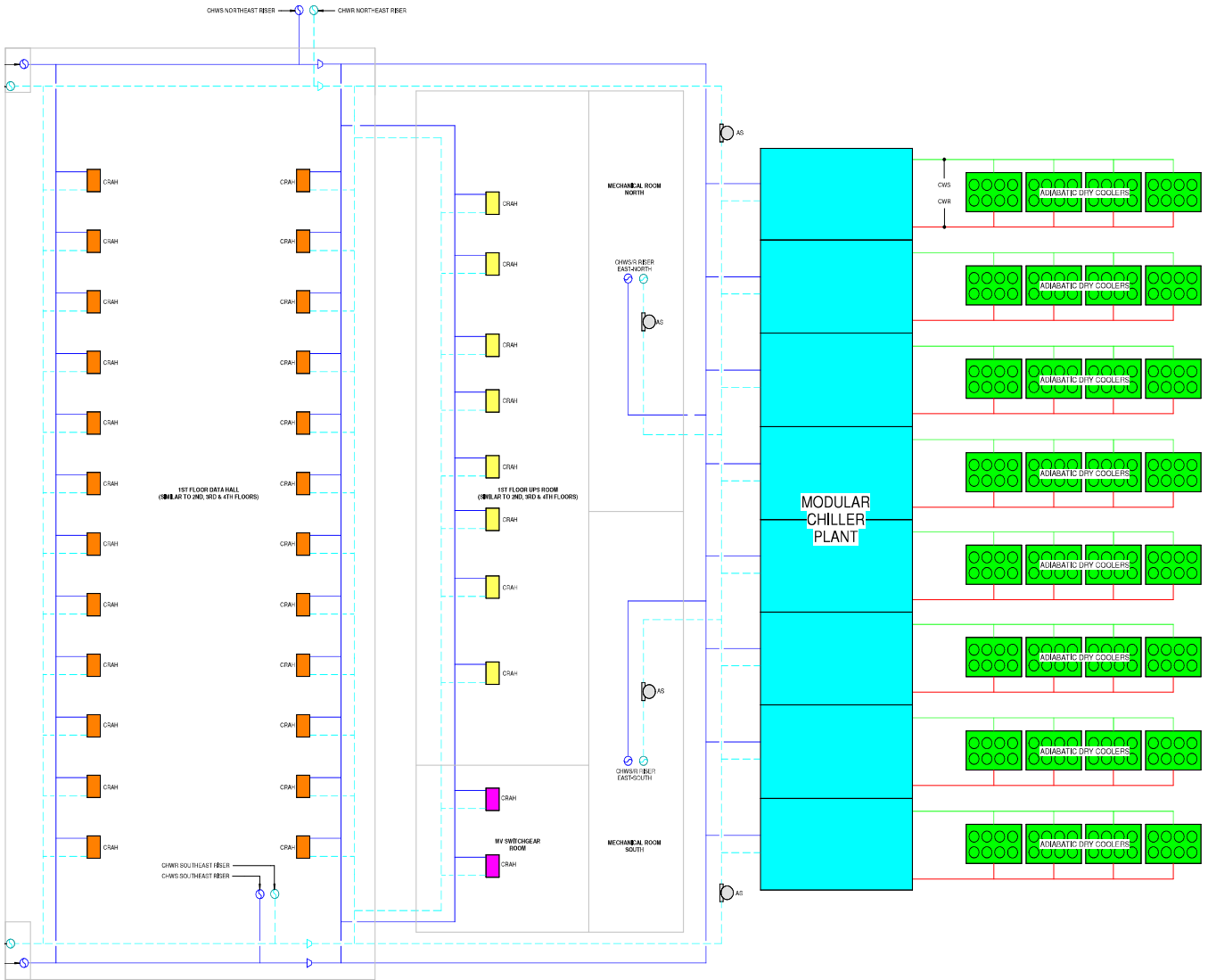


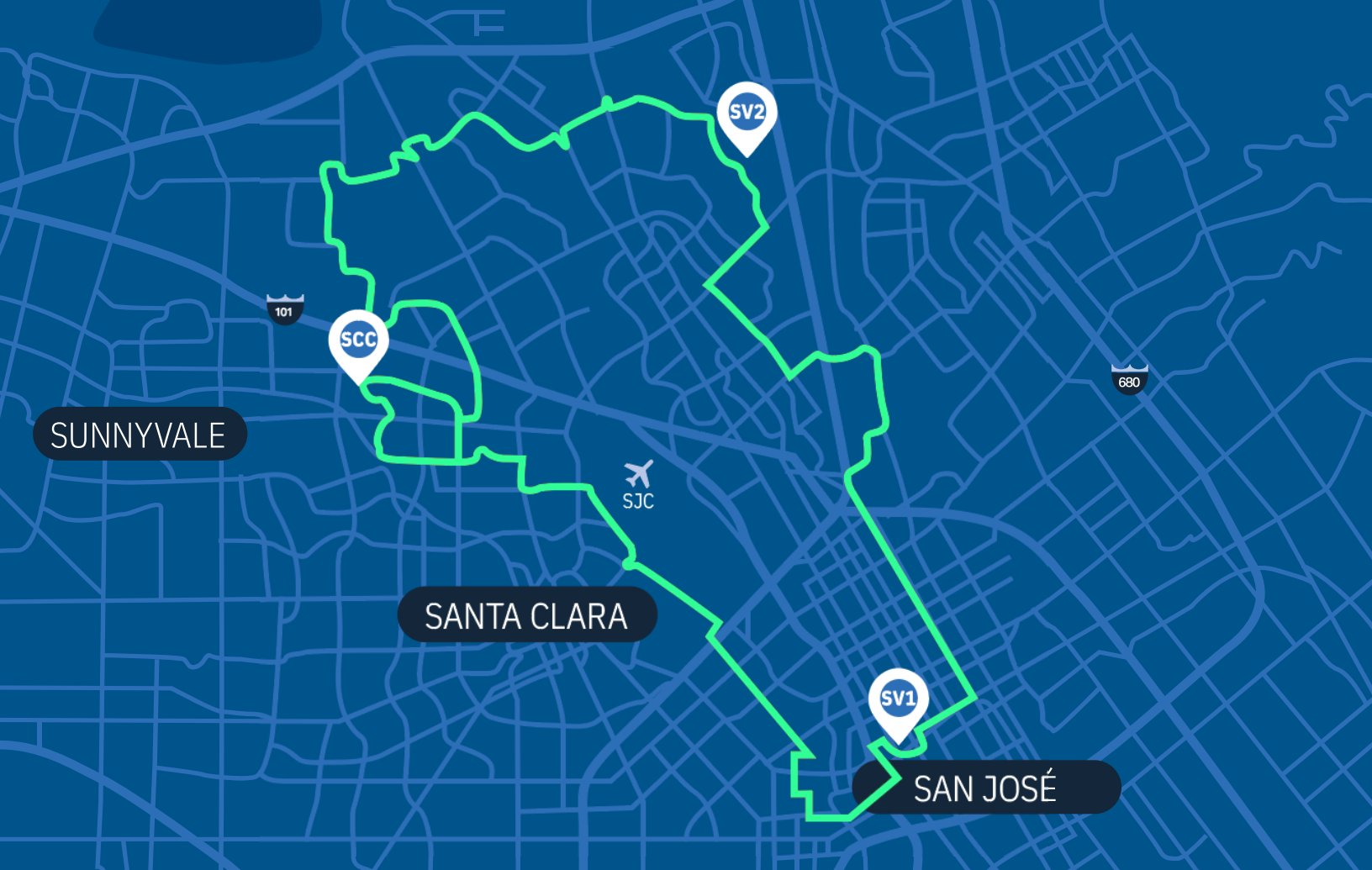
Sample Plan 1



Sample Plan 2

Modular Chiller Plant





 CoreSite Facility  Primary Fiber Route

HYBRID CONNECTS HERE:

Silicon Valley Market

CoreSite's Silicon Valley campus is the ideal environment for digital platforms with a rich ecosystem of networks and public and private cloud providers with a need to improve application performance and reduce total cost of ownership – and time to market.

- Create stellar digital experiences
- Lower latency and improve performance
- Reduce costs associated with equipment outages and power and cooling
- Improve performance by spreading workloads over multiple private and public clouds
- Increase security by limiting points of network access
- Gain lights-out capabilities, 24/7 security, field operations, remote hands and access to customer service delivery platform

This market is comprised of eight operational data centers, providing a variety of colocation options and native cloud onramps in the heart of one of the largest concentrations of internet and technology companies in the world. Our Bay area data center footprint — spanning Milpitas, San Jose and Santa Clara — is uniquely suited to meet the most demanding compute needs. With more than 205 cloud, network and IT service providers available with our data centers, as well as continual investment in market facility expansions, customers can meet growth and technology needs now and in the future.

CoreSite provides everything you need in a modern **Interconnection Hub**

- Competitive, aggressive pricing and rapid speed to market
- 23 native cloud onramps and more than 32,000 interconnections
- Open Cloud Exchange® (OCX) provides direct cloud interconnection to easily conduct business virtually everywhere
- Campus approach of 28 hyper-connected interconnected metro data centers and six edge data centers in 13 U.S. markets
- 450+ domestic and international carriers and access to 40+ intercontinental cables
- Robust ecosystem of service providers offering cybersecurity, storage/backup, DevOps, AI/ML and high-performance computing
- Operational excellence and an easy-to-use customer service delivery platform
- Agile, nimble, responsive provider empowered by a flexible technology platform
- Expert service provided by our security, technical and customer support teams

AVAILABLE **CLOUD PROVIDERS**



SUBSEA **CABLE NETWORKS**

Southern Cross

WWW.CORESITE.COM

Contact your CoreSite sales representative, or call **866.777.CORE**, to learn more.